

8

# Solving Equations part 1

9/20

HW:

1

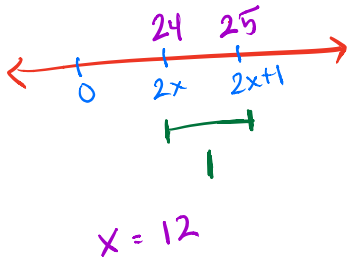
$$\begin{array}{r}
 5n + 5 = 45 \\
 \underline{-5 \quad -5} \\
 5n = 40 \\
 \underline{\quad \quad 5} \\
 n = 8
 \end{array}$$

2

$$\begin{array}{r}
 y - 3 = -11 \\
 \underline{\quad +3 \quad +3} \\
 y = -8 \\
 \underline{\quad \quad 6} \\
 y = -48
 \end{array}$$

## Clothes line Math

1

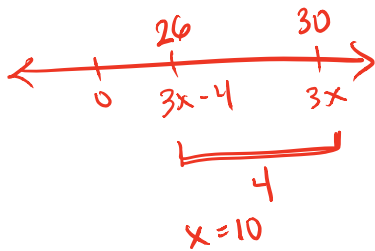


## Mathematical

$$\begin{array}{r}
 2x + 1 = 25 \\
 \underline{-1 \quad -1} \\
 2x = 24 \\
 \underline{\quad \quad 2} \\
 x = 12
 \end{array}$$

subtract  
divide

2



$$\begin{array}{r}
 3x - 4 = 26 \\
 \underline{\quad +4 \quad +4} \\
 3x = 30 \\
 \underline{\quad \quad 3} \\
 x = 10
 \end{array}$$

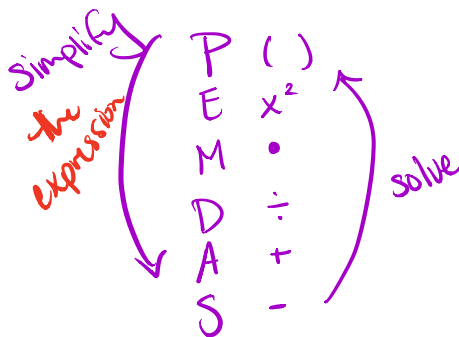
added  
divide

$$3x - 5(x-4) = 4^2 - 16 \div 8$$

expression

$$\begin{array}{l}
 * 3x - 5(x-4) \\
 = 3x - 5x + 20 \\
 = -2x + 20
 \end{array}$$

$$\begin{array}{l}
 * 4^2 - 16 \div 8 \\
 = 16 - 16 \div 8 \\
 = 16 - 2 \\
 = 14
 \end{array}$$



equation

$$\begin{array}{r}
 -2x + 20 = 14 \\
 \underline{-20 \quad -20} \\
 -2x = -6 \\
 \underline{\quad \quad -2} \\
 x = 3
 \end{array}$$

subtract  
divide